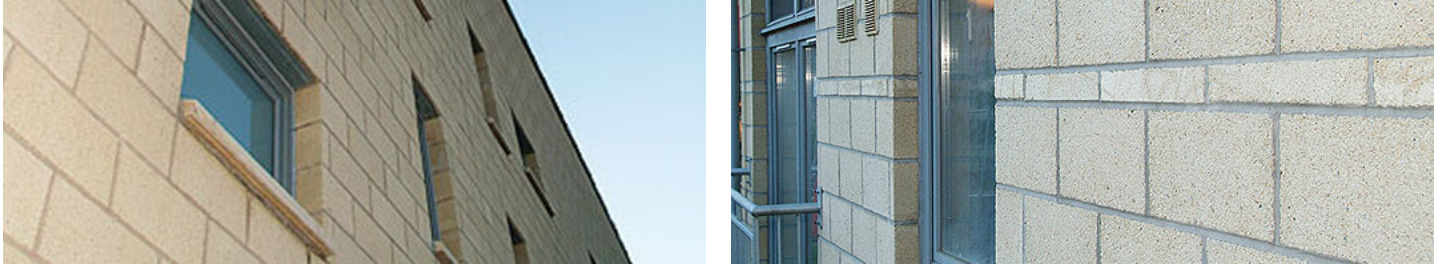


Case study

Slateford Road



Bradstone supplied a quality product with a high strength and consistency in size

Key facts

Key vendors:

Site:

Sector: Housing

Client:

Contractor: Kirkton Developments

- Precision made
- Aesthetically pleasing
- High strength

Brief

The client required a product which was cost-effective and aesthetically suited to a modern housing development in Edinburgh.

Solution

Bradstone's Fairfaced architectural masonry was specified by Kirkton Developments due to the authentic texture of the blocks and the overall look this was able to achieve.

There are many concrete blocks, classified as being architectural masonry on the market today, but few can offer the consistency of finish, accuracy of size, high strength and overall aesthetics of Bradstone Fairfaced.

Our businesses supplying

- Bradstone Structural Solutions



Tel:01530 510066

www.aggregate.com

A member of the Holcim Group