



Paving products

Ronez Paving products



Photography

Front cover

Burnt Oker at Le Bel
Horizon, Grouville

Left

Burnt Oker at Gorey
Methodist Chapel,
Grouville

Standard block paving

The classic Standard range offers the ultimate block paving for strength, durability and versatility. With seven stunning colours, the Standard range offers the ultimate low maintenance and multi-purpose paving.

The Standard range enables architects, designers, landscapers and builders to create attractive and low maintenance paved areas. Its exceptional strength and durability are ideal for precincts, thoroughfares and shopping malls accessible by both pedestrians and vehicles.

Standard block paving is available in three thicknesses:

55mm has been developed for smaller lightweight projects such as drives and footways.

65mm tackles the medium scale development; larger driveways and estate roads.

80mm is ideal for heavy duty purposes. It offers the high performance required for industrial units, dockland areas and the like.



Block size (mm)	Quantity per pack	Sq.metres per pack	No. per sq.metre
100x200x55	440	8.4	50
100x200x65*	384	7.68	50
100x200x80*	320	6.4	50

*3 weeks lead time

Made to BS EN 1338:2003, specifications available on request



Autumn Melody

Brindle

Burnt Oker

Charcoal

Grey

Red

Yellow

Infilta block paving

Unlike conventional block paving, Infilta is a permeable product that offers a solution to the new legislation for front of homes. It allows rainwater to filter through gaps between the blocks into a stone sub-base below, where there is enough space to store the water for a short time. This water then either soaks into the ground, is discharged in a controlled manner to a surface water drainage system or is collected for re-use.



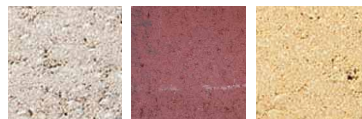
Charcoal
Other colours available*



Autumn
Melody

Brindle

Burnt Oker



Grey

Red

Yellow

*Available on a made to order basis. Allow three weeks lead time. Please call for further information.

Block size (mm)	Quantity per pack	Sq.metres per pack	No. per sq.metre
100x200x80*	320	6.4	50

Made to BS EN 1338:2003, specifications available on request



Photography

Main image top right
Driveway Infilta
in Charcoal

Main image
bottom right
Driveway Infilta
in Brindle

SUDS - Permeable paving systems

Laying guidance

Geotextile

Geotextile should be laid on top of the Granular sub-base; (20mm Ronez Aggregate). Joints should be overlapped by 300mm.

Laying Course

A 50mm depth of 2/6.3mm single size crushed, clean ronez aggregate should be layed and loosely screeded to form the bedding layer for the Infilta block paving. The accuracy of the final level of the bedding layer is of particular

importance as the aggregate will not compact down to the same degree as a sand bedding layer would when the block surface layer is vibrated.

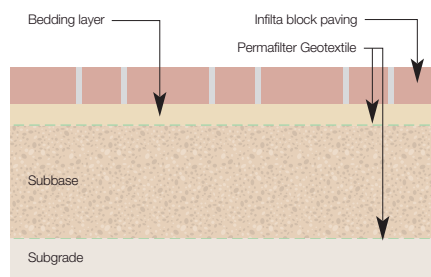
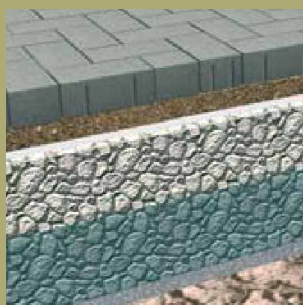
Laying block paving

The Infilta block paving should be butted tightly together and laid in a herringbone pattern to ensure maximum interlock. If cutting is required blocks should be cut width ways across the 100mm length and not the 200mm length. Blocks should be cut accurately to ensure a tight fit and should not be

less than 1 third of the individual block size.

Surface finish

Once blocks are laid they should be subjected to a first pass with a vibrating plate. After the first pass with the vibrating plate, 3mm single size clean Ronez aggregate should be brushed into the joints. Once the joints have been filled any remaining loose material should be cleared from the surface and a further pass with the vibrating plate should be undertaken.



(Further information can be found in the Interpave 'Guide to the design, construction and maintenance of concrete block permeable pavements.)


Ronez

Paving products


Garden edgings

These provide the perfect finishing touch for paved areas, lawns and flower borders. Or you can create a special feature such as a herb garden.

Edging size (mm)	Quantity per pack
65x220x440	96



Autumn Melody Brindle Burnt Oker Charcoal



Grey Red Yellow



Photography

Image top right
Garden edging in
Charcoal

Image right
Large kerb

Images bottom right
(clockwise from
top left)
External angle kerb

Transition kerb

Radius kerb

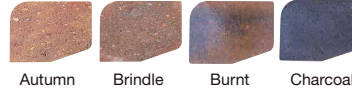
Radius kerb

Multi edge kerbs

Designed to complement the block paving ranges, our multi edge kerbing will create a distinctive edge to your drive or planted areas.

Our multi edge kerbs provide practical barriers to vehicle overrun, and are particularly recommended where driveways are laid immediately adjacent to lawned areas.

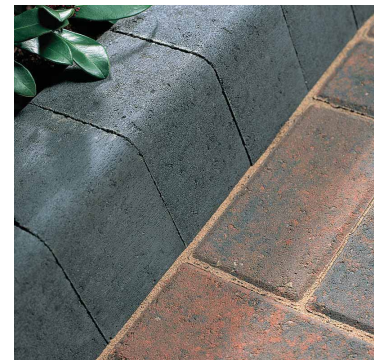
MEP size (mm)	Quantity per pack
100x150x200	192



Autumn Melody Brindle Burnt Oker Charcoal



Grey Red Yellow



Kerbs

Kerbs are not just there for practicality's sake, helping prevent vehicle overrun, for instance, where lawned areas butt right up to driveways. Designed to complement and enhance our block paving solutions, our kerbs also fulfil a key aesthetic function and can be used in a variety of ways to create different profiles.

Radius kerbs, external angle kerb and transition kerbs are made to complement our pressed kerb and drop kerbs.

Press kerbs		
Kerb size (mm)	Quantity per pack	Colours available
127x254x440	42	Grey and Pink

Press drop kerbs		
Kerb size (mm)	Quantity per pack	Colours available
127x140x440	84	Grey and Pink

Bullnosed kerbs		
Kerb size (mm)	Quantity per pack	Colours available
135x215x440	48	Grey and Pink

External angle kerb*		
Kerb size (mm)	Quantity per pack	Colours available
127x254x305	Single	Grey

Transition kerbs - left or right*		
Kerb size (mm)	Quantity per pack	Colours available
127x254/150x190	Single	Grey

*Made to order - 3 weeks lead time

*Made to order - 3 weeks lead time



Radius kerbs*		
Kerb size (mm)	Quantity per pack	Colours available
127x254x440	Single	Grey

*Made to order - 3 weeks lead time

600 radius can be used for radius 600-700
700 radius can be used for radius 700-1000
1000 radius can be used for radius 1000-5000
5000 radius can be used for radius 5000-Straight

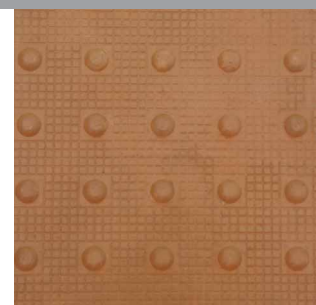
Tactile

Used in the location of a drop kerb and crossing and especially for use in identifying a crossing place for the visually impaired. Manufactured in accordance with BS 7997.

Tactile		
Tactile size (mm)	Quantity per pack	Colours available
400x400x50	Single	Buff



Buff



Complementary products

Photography

Right

Kiln dried sand being swept into joints

Its the little details that make the difference. That's why we have a range of fixing and aggregate products ideally suited to complement our paving products.

Kiln dried sand

Fine sand for filling joints available in 25kg bags and 1 tonne bags.

Jointing aggregate

A 3mm aggregate for jointing the Ronez permeable concrete block paving.

Bedding aggregate

A 6mm angular, open graded, free drainage aggregate for use with the Ronez permeable concrete block paving.

Drainage Aggregate

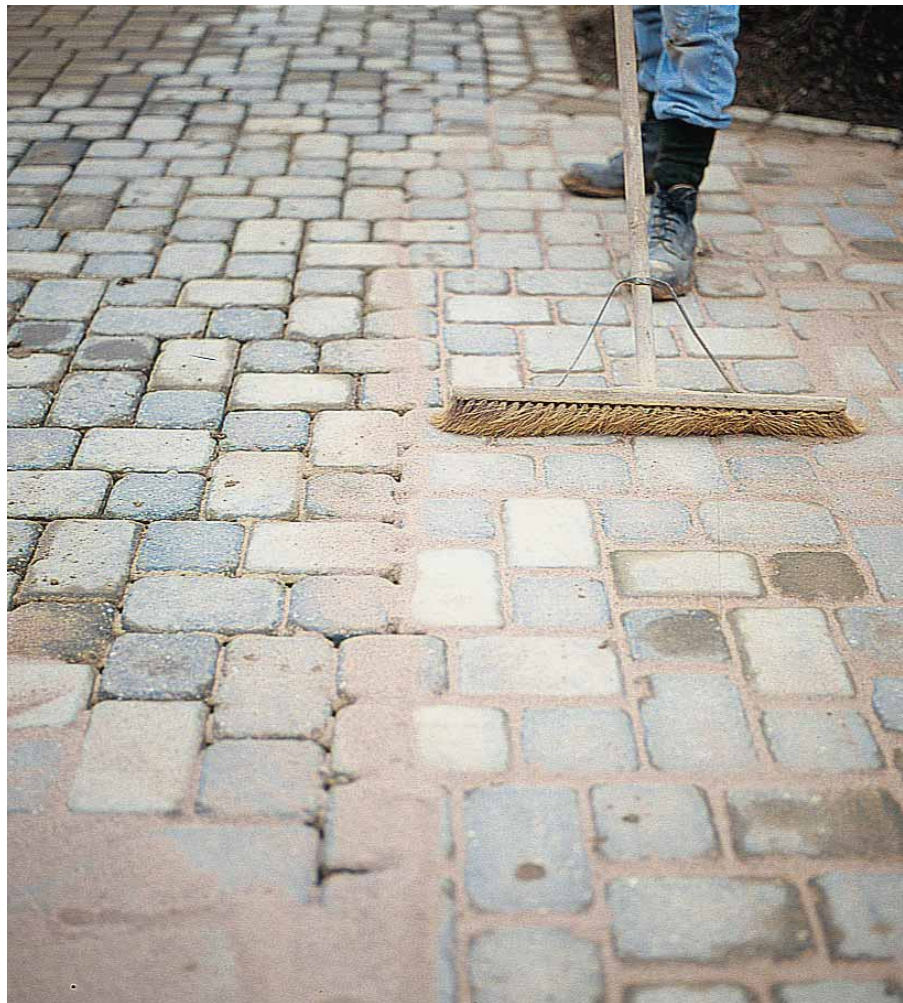
A 20mm, open graded, free draining aggregate for use with the Ronez range of concrete block permeable paving.

Granite sand

A coarse, sharp sand suitable for bedding paving stones and block paving.

Blended mix (sand and aggregates) in 25kg, ½ tonne and 1 tonne bags

A general purpose dry blended mix suitable for most DIY projects.



Ronez reserves the right to alter specifications without prior notice.

Every effort is made to ensure the accuracy of all textual and pictorial content in this guide. No charge is levied for this brochure or the advice therein, and accordingly the company, its employees and authorised agents can accept no liability whatsoever, either directly or indirectly arising from the use of its products in connection with any information or advice contained in this guide.

Efflorescence

Ronez cannot accept responsibility for the effect of efflorescence which can be a characteristic of all good quality products with a high cement content. For more information visit www.ronez.com

Laying instructions

Design

Whether you are constructing your driveway yourself or paying a contractor to do the work for you, you will need to draw up a design that suits your house and your own requirements.

Are you just replacing your existing driveway or are you extending it to make it a double drive?

Are you planning to completely landscape the front of your house to make it as low maintenance as possible?

Once these decisions have been made, you will then need to decide on the type of block you wish to use and the colour. Colour is important because you do not want it to clash with the house bricks, nor do you want it to look like a 'near miss'.

Multi-coloured products are produced randomly, therefore colour proportions in different blocks may vary widely.

For best overall effect we advise that blocks are chosen from three to five different packs and from vertical columns rather than horizontal rows.

Excavation

Depending on the size of the job, you may want to use a mini excavator, or hire a JCB to excavate the existing driveway, as this will save you time and a lot of backbreaking work.

Firstly, you need to mark out, from the design, the area in which needs to be excavated.

Once you have done this, the area needs to be dug out to the desired level, which depends on your existing surfaces while making sure that your proposed finished level is 150mm below

the damp proof course in the brick of any adjoining buildings.

If the excavated area appears to be flat, it will be necessary to create a slight slope to aid the dispersion of standing water. This should be constructed with 1 to 40 fall across the width of the drive, and a 1 to 80 fall along the length.

Edge restraints

Concrete a foundation, which should be 100mm thick in depth. The kerb unit or edge restraint will sit on top of this at the required level. This should be done using a string line and spirit level.

Mortar the kerb units or edge restraints to the foundation by using a trowel and rubber mallet.

Once the kerbs are in position, haunch the back of the units so that the concrete reaches half way up the rear of the kerb.

Sub-base

Lay Type 1 roadstone inside of the edge restraints and rake to the desired level. This should be done in layers of 50mm, and once levelled it should then be compacted using the vibrating plate.

The roadstone should be at least 100mm thick after compaction. The vibrating plate should be passed over the area at least 7 times to make sure it is thoroughly compacted.

Screeding

Once this has been done, a layer of slightly damp granite sand, to the depth of 50mm, needs to be applied and compacted with the vibrating plate.

A second layer of granite sand to a level of 20mm then needs to be applied on top of this. Using the string lines,

screeding rails and straight edge, this second layer of granite sand needs to be levelled to the correct falls.

Paving Installation

You should always begin laying block paving from the bottom of a slope and preferably starting from a right angle or a straight edge. Place the blocks on top of the laying course making sure that the blocks are around 4 to 5mm above the desired finished level.

Continue with your desired pattern while making sure that you are using blocks from between 3 to 5 packs at once as this will minimise any colour banding that could appear on the driveway.

Once all of the full blocks are laid, you will need to cut an amount of blocks to fill the smaller gaps. This can be done by using either the block splitter or the diamond disc saw. You should avoid making a cut block less than a third of its original size.

Finishing touches

Once all of the blocks have been laid, sweep the drive thoroughly to make sure that there is no debris left on the blocks. Then apply kiln dried sand and sweep across the whole of the drive, making sure that this sand falls down between the joints of the blocks.

After doing this, the drive needs compacting with the vibrating plate. You will then need to sweep more kiln dried sand over the drive and compact again. Keep doing this until all of the joints are full of sand.

Your driveway is now ready to be used.

Ronez, La Route du Nord.
St John, Jersey JE3 4AJ
Tel: +44 (0)1534 865609
Fax: +44 (0)1534 864450
Email: ronez@aggregate.com
www.ronez.com


AGGREGATE
INDUSTRIES

A member of the Holcim Group

