



**MASTERBLOCK**

## Concrete block portfolio

A range of concrete blocks for the commercial and housing markets

# Masterblock

## An overview

Masterblock, part of the Aggregate Industries group, is one of the UK's largest manufacturers of concrete blocks supplied for the commercial and housing markets.

Masterblock manufactures and supplies aggregate concrete blocks for use in a variety of projects from two-storey housing to multi-storey developments and commercial buildings. The blocks are manufactured in a wide range of sizes, strengths and finishes offering total flexibility. Primarily consisting of engineered dense, lightweight and paint grade blocks, Masterblock distributes across the UK to all major conurbations.

### Our sectors

#### Housebuilding

Masterblock is widely used by housing developers for all types of house build, including executive homes, high density flats or apartments, social housing and self builds. They are also used extensively in renovation, extensions and alterations work. The products are designed to offer solutions to the latest Building Regulations such as Part E (Resistance to the Passage of Sound) and Part L (Conservation of Fuel and Power).

#### Commercial buildings

Masterblock is specified for use on many prestigious project types including sports and leisure centres, supermarkets, retail parks, hospitals, schools and colleges. Again solutions to all the challenges posed by the Building Regulations have been developed and are reviewed as the legislation evolves.

#### Quality and performance standards

Masterblock is certified to BS EN ISO 9001:2008 and BS EN ISO 14001 quality standards, and as part of Aggregate Industries, products from Masterblock are certified as coming from a Responsible Source, certified under BSI, BES571075 to the requirements of BES6001. This is of special relevance to schemes seeking high ratings under the Code for Sustainable Homes guidelines or BREEAM rated developments.

#### Research and development

As part of Aggregate Industries, we have unrivalled access to the highest quality raw materials, concrete technology, research and contractor best practice. This expertise is constantly being channelled into developing new, innovative building products, for example our sustainable Enviroblock range.

Allied to all of this is a company ethos underpinned by rigorously implemented environmental, sustainability, and health and safety policies which ensure that Masterblock offers the very best at every interface with the people who design, specify, build with, use and live amongst our products.

### Product pathfinder

	Page No.		Page No.
Enviroblock	04	Masterdenz	10
Masterlite Pro Acoustic	06	Masterlite Pro	12
Masterdenz Fairfaced	08	Masterlite Ultra	12





# Masterblock products

## Enviroblock

### Technical data information

[www.aggregate.com/enviroblock](http://www.aggregate.com/enviroblock)



Dense and lightweight blocks containing a minimum of 80% recycled/secondary aggregates.

- 80% minimum recycled/secondary aggregate content
- Environmentally engineered to meet the demands of today's society
- Raw materials used are specifically selected for their environmental performance and the products comply with all European and UK technical standards
- For use internally and externally both above and below dpc
- Available in solid format in both 100mm and 140mm width with a standard strength 7.3N/mm<sup>2</sup> and 10.4N/mm<sup>2</sup>
- Available in standard finish or Paintgrade to order
- 140mm width blocks, both in Dense & Lightweight available below 20kg to assist with manual handling requirements.



### Enviroblock product range

Size (mm)	440x215	440x215	290x215	440x215	440x215
Thickness (mm)	100	140	140	100	140
Density (kg/m <sup>3</sup> )	1950 (Dense)	1950 (Dense)	1950 (Dense)	1450 (Lightweight)	1450 (Lightweight)
Weight (kg)	18.73	26.22	17.28	14.13	19.78
Strength	7.3 and 10.4 N/mm <sup>2</sup>	7.3 and 10.4 N/mm <sup>2</sup>	7.3 and 10.4 N/mm <sup>2</sup>	7.3 and 10.4 N/mm <sup>2</sup>	7.3 and 10.4 N/mm <sup>2</sup>
Thermal conductivity (W/mK)	Int. 1.27 Ext. 1.37	Int. 1.27 Ext. 1.37	Int. 1.27 Ext. 1.37	Int. 0.78 Ext. 0.84	Int. 0.78 Ext. 0.84

Int. - Internal Ext. - External

Please refer to our technical data sheets for specific product characteristics.

For full technical details please refer to the Enviroblock technical data sheet using the quick web link stated at the page header.

## Case study: CaNeBuZo, Lincolnshire

The Carbon Neutral Business Zone (CaNeBuZo) near Spalding in Lincolnshire, is a ground breaking development which aims to prove that commercially viable buildings can be created with today's technology to meet the aspirations of Level 6 of the UK's Code for Sustainable Homes - a standard which will not be mandatory for commercial buildings until 2019.

### Project objectives

Designed by architect Dr. Jeremy Harrall from SEArch Architects, the £1,300,000 CaNeBuZo development includes office buildings, an eco cafe, classroom and demonstration eco house. The architect wanted to prove the potential of thermal mass buildings by designing the UK's first truly zero carbon business park and show how they require no heating, eliminating associated CO<sub>2</sub> emissions.

### Masterblock solution

Masterblock supplied Enviroblock to the scheme which contains a minimum 80% recycled/secondary aggregate. The blocks helped SEArch to achieve their carbon emission targets as the raw materials are selected specifically for their environmental performance while complying to all European and UK technical standards.

Enviroblock was chosen for its generic BRE A rating which will assist in attaining high BREEAM scores.

Additionally, as part of Aggregate Industries, Masterblock is certified as a Responsible Source supplier under the BES 6001 framework developed by BRE (Building Research Establishment).



<b>Client:</b>	SEArch Architects Ltd
<b>Architect:</b>	SEArch Architects Ltd
<b>Company:</b>	Masterblock
<b>Product:</b>	Enviroblock

## Masterlite Pro Acoustic

### Technical data information

[www.aggregate.com/masterliteproacoustic](http://www.aggregate.com/masterliteproacoustic)



A cost effective, close textured, Lightweight density paintgrade unit developed specifically for use in schools to meet the acoustic requirement of BB93.

- Excellent sound reduction block to meet the acoustic requirements of BB93
- Masterlite Pro Acoustic has low air permeability ensuring good sound reduction values, as well as thermal performance
- Reaction to fire is best in class (A1) complying with BB100 for a minimum 2 hours fire resistance
- Consistent close textured face makes Masterlite Pro Acoustic ideal for direct decoration (note: only one face and one end guaranteed)
- Rw values of 45dB for 100mm solid blocks and 50dB for 140mm solid blocks, can be achieved when painted both sides
- Good background for heavy duty fixings
- Masterlite Pro Acoustic is moisture tolerant
- Available in solid format in both 100mm and 140mm width with a standard strength 7.3N/mm<sup>2</sup> and 10.4N/mm<sup>2</sup>
- Available in 140mm width below 20kg to assist with manual handling requirements.



### Masterlite Pro Acoustic

product range

Size (mm)	440x215	440x215
Thickness (mm)	100	140
Density (kg/m <sup>3</sup> )	1450	1450
Weight (kg)	14.1	19.8
Colour available	Natural	Natural
Finish	Paintgrade	Paintgrade
Thermal conductivity (W/mK)	Int. 0.60 Ext. 0.64	Int. 0.60 Ext. 0.64

Int. - Internal Ext. - External

Please refer to our technical data sheets for specific product characteristics.

For full technical details please refer to the Masterlite Pro Acoustic technical data sheet using the quick web link stated at the page header.

## Case study: Holte Mayfield Lozells School, Birmingham



The Holte Visual and Performing Arts College, Lozells Junior and Infant School and Mayfield SEN School were brought together on one integrated campus in Birmingham. The new site is adjacent to the old one which was demolished once the build was complete. The first part of the development was the new sports hall, opened in Autumn 2010. The school was designed to attain the highest BREEAM ratings.

### Project objectives

The school is one of the first developed as part of Birmingham's Building Schools for the Future programme.

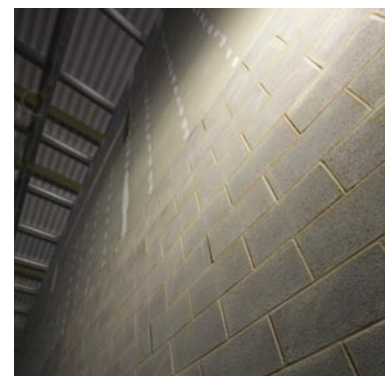
The new Holte School contains many different sports areas within it, so noise had to be reduced to the absolute minimum. The building also needed to be air tight to dramatically conserve heat and reduce energy consumption in conjunction with current building regulations.

### Masterblock solution

The Masterlite Pro Acoustic block was chosen for this project due to its excellent sound reduction properties that met the requirements of BB93. Low air permeability was also important for the building to meet its designated thermal properties.

Another Aggregate Industries business, Bradstone Structural Solutions, supplied EnviroMasonry walling due to being BRE A+ rated which assisted in attaining high BREEAM scores.

Holte School illustrates how Masterblock and Aggregate Industries can supply integrated sustainable construction solutions for a variety of applications.



<b>Client:</b>	Birmingham BSF (Catalyst Education Consortium), Birmingham City Council and Bovis Lend Lease
<b>Architect:</b>	Archial Architects
<b>Contractors:</b>	Bovis Lend Lease and Irvine Whitlock
<b>Companies:</b>	Masterblock, Bradstone Structural Solutions
<b>Products:</b>	Masterlite Pro Acoustic, Bradstone Structural Solutions EnviroMasonry textured Birch and concrete sills to match EnviroMasonry textured

# Masterblock products

## Fairfaced

### Technical data information

[www.aggregate.com/masterdenzfairfaced](http://www.aggregate.com/masterdenzfairfaced)  
[www.aggregate.com/masterlitefairfaced](http://www.aggregate.com/masterlitefairfaced)



An economical solution to undecorated masonry walls.

- Available in both Dense and Lightweight density
- Available in solid and hollow format for ultimate versatility with a standard strength of 7.3N/mm<sup>2</sup>
- High strength blocks are available subject to order to your specification
- Manufactured from carefully selected aggregates to give both a close texture and a natural colour
- Masterblock's quality assured manufacture provides a one face and one end guarantee
- For use internally and externally (solid units only) both above and below dpc
- Available as a Buff or Grey Unit.

## Fairfaced

product range

Size (mm)	440x215	440x215	440x215	440x215	440x215	440x215	440x215	440x215
Thickness (mm)	75	100	140	140 Holl	140 Cell	215 Holl	100	140
Density (kg/m <sup>3</sup> )	1900 (Dense)	1900 (Dense)	1900 (Dense)	1900 (Dense)	1900 (Dense)	1900 (Dense)	1450 (Lightweight)	1450 (Lightweight)
Weight	13.7	18.3	25.6	19.8	17.6	25.1	14.1	19.8
Strength	7.3N/mm <sup>2</sup>	7.3N/mm <sup>2</sup>	7.3N/mm <sup>2</sup>	7.3N/mm <sup>2</sup>	7.3N/mm <sup>2</sup>	7.3N/mm <sup>2</sup>	10.4	10.4
Colour	Buff/Grey	Buff/Grey	Buff/Grey	Buff/Grey	Buff/Grey	Buff/Grey	Grey	Grey
Finish	Fairfaced	Fairfaced	Fairfaced	Fairfaced	Fairfaced	Fairfaced	Fairfaced	Fairfaced
Thermal conductivity (W/mK)	Int. 1.22 Ext. 1.31	Int. 1.22 Ext. 1.31	Int. 1.22 Ext. 1.31	Int. 1.22 Ext. 1.31	Int. 1.22 Ext. 1.31	Int. 1.22 Ext. 1.31	Int. 0.60 Ext. 0.64	Int. 0.60 Ext. 0.64

Int. - Internal Ext. - External

Please refer to our technical data sheets for specific product characteristics.

For full technical details please refer to the Masterdenz Fairfaced or the Masterlite Fairfaced technical data sheet using the quick web link stated at the page header.

## Case study: Cardiff City Stadium, Wales

### Photography

#### Right

(CC) Nick Treby  
[www.flickr.com/photos/biggleswadeblue/](http://www.flickr.com/photos/biggleswadeblue/)

Masterblock was specified by brickwork contractors Reussir Ltd for the brand new Cardiff City stadium, which became the home of Cardiff City FC and Cardiff Blues RUFC from the beginning of the 2009-10 season.



### Project objectives

The new 25,823 capacity all-seater ground is the second largest stadium in Wales after the Millennium Stadium and is built on the site of Cardiff Athletics Club near to the football club's Ninian Park facility. The £29 million project includes a retail park, a new housing development on the Ninian Park site, a hotel and a new athletics stadium.

### Masterblock solution

As part of the project, Masterblock has supplied 18,000m<sup>2</sup> of its Masterdenz Fairfaced block in both 100mm and 140mm widths.

Mark Goodman, Site Agent for Reussir Ltd, who secured the brickwork contract from main contractors Laing O'Rourke, commented:

“ We specified Masterblock's range of concrete blocks based on the superior product performance and ease of use compared to other blocks on the market.

Only recently we successfully completed a project for Hereford Technical College using Masterblock, so it was the logical choice for this new contract. ”

<b>Client:</b>	Cardiff City FC
<b>Main contractor:</b>	Laing O'Rourke
<b>Brickwork contractor:</b>	Reussir Ltd
<b>Products:</b>	Masterdenz Fairfaced

# Masterblock products

## Masterdenz

### Technical data information

[www.aggregate.com/masterdenz](http://www.aggregate.com/masterdenz)



High strength, dense, robust, load bearing units for use in internal or external walls in a variety of sizes, strengths and finishes offering total flexibility.

- Available in solid and hollow format for ultimate versatility with a standard strength of 7.3N/mm<sup>2</sup>
- High strength blocks up to 30N/mm<sup>2</sup> are available subject to order to your specification
- Masterdenz blocks are available in standard and paintgrade finishes for various applications
- Quality assured manufacture
- For use internally and externally both above and below dpc.

## Masterdenz

### product range

Size mm	440x215	440x215	440x215	440x215	440x215	290x215	440x215	440x215	440x215
Thickness (mm)	75	100	100 Cell	140	140 M/Cell	140	190	215	215 Holl
Density (kg/m <sup>3</sup> )	1960	1960	1960	1960	1960	1960	1960	1960	1960
Weight	14.1	18.8	14.9	26.4	19.2	17.4	35.8	40.5	25.1
Strength	7.3N/mm <sup>2</sup>	7.3N/mm <sup>2</sup>	7.3N/mm <sup>2</sup>	7.3N/mm <sup>2</sup>	7.3N/mm <sup>2</sup>	7.3N/mm <sup>2</sup>	7.3N/mm <sup>2</sup>	7.3N/mm <sup>2</sup>	7.3N/mm <sup>2</sup>
Colour	Natural	Natural	Natural	Natural	Natural	Natural	Natural	Natural	Natural
Finish	Std and P/G	Std and P/G	Std and P/G	Std and P/G	Std and P/G	Std and P/G	Std and P/G	Std and P/G	Std and P/G
Thermal conductivity (W/mK)	Int. 1.29 Ext. 1.38	Int. 1.29 Ext. 1.38	Int. 1.29 Ext. 1.38	Int. 1.29 Ext. 1.38	Int. 1.29 Ext. 1.38	Int. 1.29 Ext. 1.38	Int. 1.29 Ext. 1.38	Int. 1.29 Ext. 1.38	Int. 1.29 Ext. 1.38

Int. - Internal Ext. - External Std. - Standard P/G - Paintgrade

Please refer to our technical data sheets for specific product characteristics.

For full technical details please refer to the Masterdenz technical data sheet using the quick web link stated at the page header.

## Case study: Image, Hemel Hempstead



A £150 million mixed use, design and build development by property developer Dandara that includes the former iconic Kodak Tower has benefited from the unique manufacturing skills of Masterblock.

### Project objectives

The tender process was based on developing a 30N block that met and exceeded the strength and stability construction requirements for the scheme. The development, which lies at the heart of Hemel Hempstead, will provide 434 new homes made up of three blocks of Housing Association dwellings.

### Masterblock solution

When Masterblock were first approached about this scheme, the maximum standard Masterblock product was a 22.5N.

Masterblock's in-house technical team worked closely with Dandara on the requirement for, and specification of, a 30N block, which was considered and agreed

as the correct specification for the height of the Kodak Tower. Initially, Masterblock created four different solutions for Dandara to review, but the new 30N block was selected, not least as it had been developed specifically to deliver the strength and withstand the stresses anticipated for a 22 storey tower.

The 30N block is one of nine different types and sizes of Masterblock specified for the entire Image scheme. These range from the 100mm 7N solid dense block and the 140mm 10.4N Masterlite Pro block, through to the 140mm 17.5N and 22.5N midi blocks.

The development includes new buildings arranged around a new public landscaped square lined with shops and cafes and

a commercial office. The entire Image development will be linked to Hemel Hempstead town centre by a new pedestrian footbridge and a shuttle bus service will run between Image and the station at peak commuting hours.



<b>Client:</b>	Dandara
<b>Architect:</b>	Dandara
<b>Product:</b>	Bespoke 30N blocks, 100mm 7N solid dense blocks, 140mm 10.4N Masterlite Pro blocks, 140mm 17.5N and 22.5N midi blocks

# Masterblock products

## Masterlite Pro

### Technical data information

[www.aggregate.com/masterlitepro](http://www.aggregate.com/masterlitepro)

A range of high strength, robust, medium density, load bearing units for use in either internal or external walls.

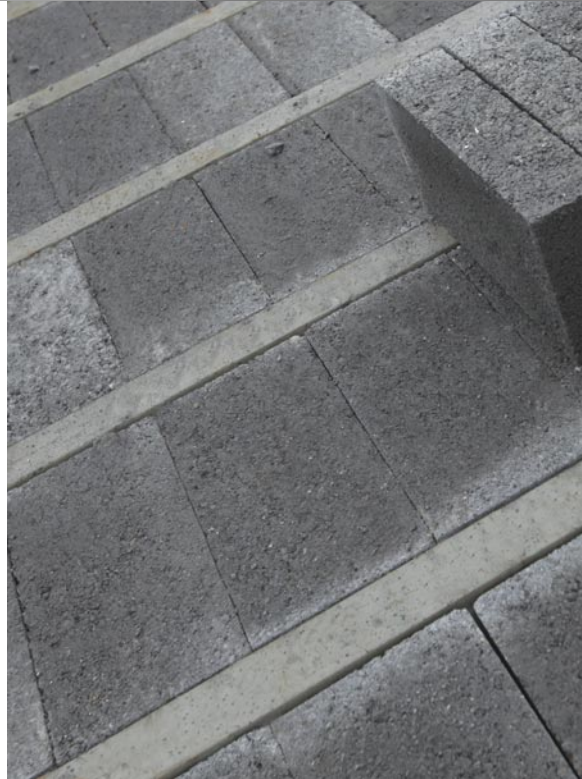
- Available in solid format with a standard strength of 3.6N/mm<sup>2</sup> and 7.3N/mm<sup>2</sup>
- 10.4 N/mm<sup>2</sup> blocks are available subject to order
- Masterlite Pro blocks are available in standard and paintgrade finishes for various applications and total flexibility
- For use internally and externally, both above and below dpc (7.3 and 10.4N/mm<sup>2</sup> only).

### Masterlite Pro

product range

Size (mm)	440x215	440x215	440x215
Thickness (mm)	75	100	140
Density (kg/m <sup>3</sup> )	1450	1450	1450
Weight	10.6	14.1	19.8
Strength	3.6 - 10.4N/mm <sup>2</sup>	3.6 - 10.4N/mm <sup>2</sup>	3.6 - 10.4N/mm <sup>2</sup>
Colour	Natural	Natural	Natural
Finish	Std and P/G	Std and P/G	Std and P/G
Thermal conductivity (W/mK)	Int. 0.60 Ext. 0.64	Int. 0.60 Ext. 0.64	Int. 0.60 Ext. 0.64

Int. - Internal Ext. - External Std. - Standard P/G - Paintgrade  
Please refer to our technical data sheets for specific product characteristics.



For full technical details please refer to the Masterlite Pro technical data sheet using the quick web link stated at the page header.

## Masterlite Ultra

### Technical data information

[www.aggregate.com/masterliteultra](http://www.aggregate.com/masterliteultra)

A low weight block designed for thermal efficiency and manual handling considerations.

- A range of lightweight, robust, load bearing units manufactured using Class 1 aggregate for fire resistance
- Provides an excellent key for plastering and rendering
- Masterlite Ultra was developed specifically to be used as a one handed lift
- Available in solid format in 100mm width with standard strength 3.6N/mm<sup>2</sup>.

### Masterlite Ultra

product range

Size (mm)	440x215
Thickness (mm)	100
Density (kg/m <sup>3</sup> )	850
Weight (kg)	8.28
Strength	3.6N/mm <sup>2</sup>
Colour available	Natural
Finish	Standard
Thermal conductivity (W/mK)	Int. 0.29 Ext. 0.32

Int. - Internal Ext. - External  
Please refer to our technical data sheets for specific product characteristics.



For full technical details please refer to the Masterlite Ultra technical data sheet using the quick web link stated at the page header.

## Case study: Leicester Tigers RFC, new North Stand

### Photography

#### Right

(CC) NotFromUtrecht  
<http://commons.wikimedia.org/wiki/User:NotFromUtrecht>

Aggregate blocks helped shape the new 10,000 seater Leicester Tigers Caterpillar stand which is now the largest capacity designated rugby union ground in the Guinness Premiership.



### Masterblock solution

Masterblock and other Aggregate Industries businesses maintained a close working relationship with the club and a dialogue directly with its Chief Executive to ensure the smooth running of the project. Masterlite Pro and Masterdenz concrete blocks were proposed to the architect and later specified.

Bradstone Structural Solutions, another Aggregate Industries business, was also chosen to supply Premier Polished blocks in Skye White to the rear entrance.

### Product features

Masterlite Pro blocks are a range of high strength, robust, load bearing units for use in either internal or external walls available in solid format with a standard strength of 3.6N/mm<sup>2</sup> and 7.3N/mm<sup>2</sup> plus 10.4 N/mm<sup>2</sup> blocks to order. Masterlite Pro blocks are available in standard and paintgrade finishes for various applications and total flexibility.

<b>Client:</b>	Leicester Tigers Rugby Football Club
<b>Architect:</b>	AFL Architects
<b>Contractor:</b>	Galliford Try
<b>Companies:</b>	Masterblock and Bradstone Structural Solutions
<b>Products:</b>	Masterblock Masterlite Pro concrete block in paintgrade and standard finishes and Masterblock Masterdenz concrete blocks
<b>Other products:</b>	Bradstone Structural Solutions, EnviroMasonry Polished in Skye White

# Technical support and partnering

Masterblock offer a full technical support service from concept to completion as the perfect supply partner.

Our team of experts are more than willing to help you through all stages of your construction project. We are able to offer advice and documentation on all concrete block best practice and regulations including the following specification areas.

**Air tightness** - Excessive air leakage results in increased energy consumption and a drafty cold building. The requirements laid down in Part L of the Building Regulations indicate that failure to comply with detailing can lead to buildings with excessive heat loss.

**Durability** - Concrete masonry is inherently durable and if used in accordance with the appropriate British Standard will last the lifetime of the building into which they have been constructed. Durability is governed by the characteristics of the units.

**Fire resistance** - Fire resistance of a masonry wall is taken to be the time elapsed from the start of the test, to failure of stability, integrity or thermal insulation (30min - 6hrs). Notional periods of the fire resistance for masonry walls are available on our product data sheets.

**Health and safety** - To reduce the risk of injury the blockwork design, site conditions and the way in which the work is organised should be properly planned. Practical advice on these matters should help designers, specifiers and those managing work on site as well as those handling the blocks.

**Movement control** - Blockwork may crack because of differential changes in dimension within the wall or because of relative movement between the wall and adjacent structures. These cracks, although not necessarily serious from the view of stability, look unsightly and may have a detrimental effect on the performance of a wall as regards to weather resistance and thermal insulation.

**Plastering, rendering and jointing** - The choice of plaster and its application should be carried out in accordance with BS EN 13914. Several factors, including the appearance desired, exposure conditions, nature of the background and the functional requirements, determine the choice of render mix. The choice of mortar pointing will depend upon the appearance required and degree of exposure.

**Sound reduction Part E** - Approved Document E gives guidance on the numerical values of airborne and impact sound insulation that should be achieved.

**Structural** - The recommendations for the structural design of masonry is given in BS 5628: Part 1 and 2. Additional guidance is also given in BS 5628 Part 3 as well as BS EN 1996 Parts 1 to 3. Building shall be designed and constructed so that the combined dead imposed and wind loads are sustained and transmitted by it to the ground.

**Thermal** - Energy use in buildings is a major source of carbon dioxide emissions which are a contributor to climate change. Dependent upon the location of the building, there are two regulatory documents that will apply to designers and specifiers: 1. Part J of the Building Standards (Regulations) applies to Scotland only 2. Part L of the Building Regulations applies to England and Wales.

For more detailed guidance and assistance with the preparation of specifications, please contact our technical support services on 01285 646800.

# Aggregate Industries

## The complete service

Masterblock is part of the Aggregate Industries group, offering an extensive range of products and services to the construction industry.



### Structural solutions

Bradstone Structural Solutions supplies walling, roofing and cast stone architectural dressings for commercial and domestic building projects throughout the UK.

**Tel:** 01285 646 884

**Email:** [bradstone-structural@aggregate.com](mailto:bradstone-structural@aggregate.com)



### Asphalt and surfacing materials

Bardon Asphalt is a leading supplier of a full range of coated materials with over 50 locations in the UK, serving major conurbations, including Express Asphalt sites for collect business.

**Tel:** 01455 288 222

**Email:** [midlands.sales@aggregate.com](mailto:midlands.sales@aggregate.com)



### Hard landscaping

Charcon flag paving, block paving and kerb products are available in both concrete and natural stone. Surface water drainage and SUDS are also part of a wide ranging product portfolio.

**Tel:** 01335 372 222

**Email:** [sales.charcon@aggregate.com](mailto:sales.charcon@aggregate.com)



### Bespoke and specialist precast concrete

Charcon manufactures tailor made and bespoke concrete products for use in construction and building structures including rail applications.

**Tel:** 01455 288 275

**Email:** [charconspecialist@aggregate.com](mailto:charconspecialist@aggregate.com)



### Flooring

Charcon Flooring supplies precast concrete products, including beam & block flooring, hollowcore flooring, specialist flooring, stairs and landings throughout the UK.

**Tel:** 01249 463 244

**Email:** [charcon.flooring@aggregate.com](mailto:charcon.flooring@aggregate.com)



### Contracting services

Bardon Contracting complements Aggregate Industries' construction materials portfolio through its involvement in infrastructure, surfacing and civil contracting works.

**Tel:** 01530 510 066

**Email:** [bardon-contracting@aggregate.com](mailto:bardon-contracting@aggregate.com)

Carnforth, Lancashire  
Croft, Leicester  
North End, Wiltshire  
Melbur, Cornwall  
Kemnay, Scotland

Tel: 01524 736636 Fax: 01524 736635  
Tel: 01455 285670 Fax: 01455 285206  
Tel: 01285 646900 Fax: 01285 646949  
Tel: 01726 862222 Fax: 01726 862229  
Tel: 01467 651000 Fax: 01467 642342

[www.masterblock.co.uk](http://www.masterblock.co.uk)  
[www.aggregate.com/masterblock](http://www.aggregate.com/masterblock)



A member of the Holcim Group

